



# TCEAL4 Polyclonal Antibody

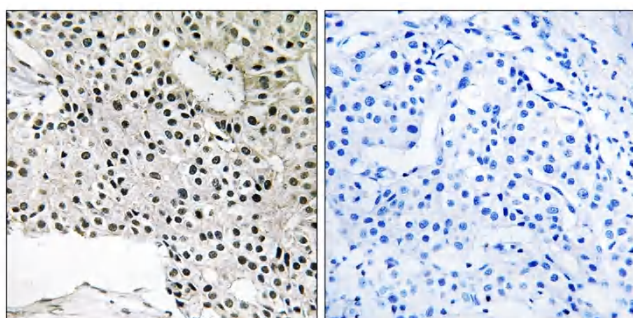
<b>Catalog No</b>	YP-Ab-02086
<b>Isotype</b>	IgG
<b>Reactivity</b>	Human;Rat;Mouse;
<b>Applications</b>	IHC;IF;ELISA
<b>Gene Name</b>	TCEAL4
<b>Protein Name</b>	Transcription elongation factor A protein-like 4
<b>Immunogen</b>	The antiserum was produced against synthesized peptide derived from human TCEAL4. AA range:166-215
<b>Specificity</b>	TCEAL4 Polyclonal Antibody detects endogenous levels of TCEAL4 protein.
<b>Formulation</b>	Liquid in PBS containing 50% glycerol, 0.5% BSA and 0.02% sodium azide.
<b>Source</b>	Polyclonal, Rabbit,IgG
<b>Purification</b>	The antibody was affinity-purified from rabbit antiserum by affinity-chromatography using epitope-specific immunogen.
<b>Dilution</b>	IHC: 1/100 - 1/300. ELISA: 1/20000.. IF 1:50-200
<b>Concentration</b>	1 mg/ml
<b>Purity</b>	≥90%
<b>Storage Stability</b>	-20°C/1 year
<b>Synonyms</b>	TCEAL4; NPD017; Transcription elongation factor A protein-like 4; TCEA-like protein 4; Transcription elongation factor S-II protein-like 4
<b>Observed Band</b>	
<b>Cell Pathway</b>	Nucleus .
<b>Tissue Specificity</b>	Epithelium,Pituitary,Placenta,Smooth muscle,
<b>Function</b>	function:May be involved in transcriptional regulation.,similarity:Belongs to the TFS-II family. TFA subfamily.,
<b>Background</b>	This gene encodes a member of the transcription elongation factor A (SII)-like (TCEAL) gene family. This family is comprised of nuclear phosphoproteins that modulate transcription in a promoter context-dependent manner. Multiple family members are located on the X chromosome. Alternatively splicing results in multiple transcript variants. There is a pseudogene for this gene on chromosome 13. [provided by RefSeq, Apr 2015],
<b>matters needing attention</b>	Avoid repeated freezing and thawing!



**Usage suggestions**

This product can be used in immunological reaction related experiments. For more information, please consult technical personnel.

**Products Images**



Immunohistochemistry analysis of paraffin-embedded human breast carcinoma, using TCEAL4 Antibody. The picture on the right is blocked with the synthesized peptide.